

WIPER INVISIBLE SHOWER CHANNELS



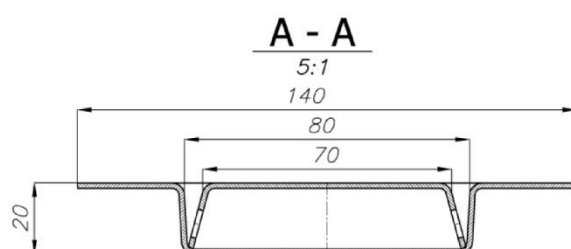
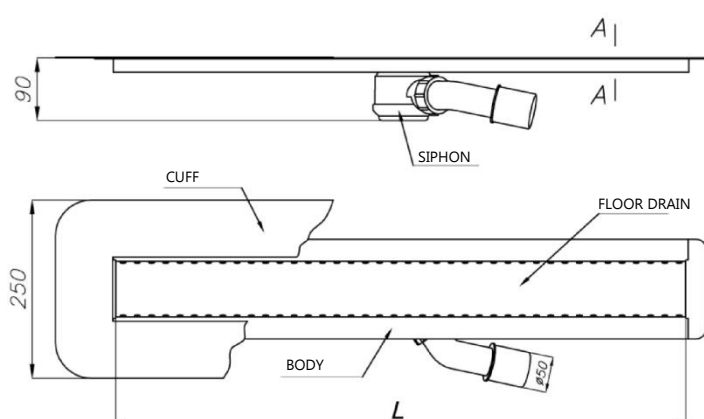
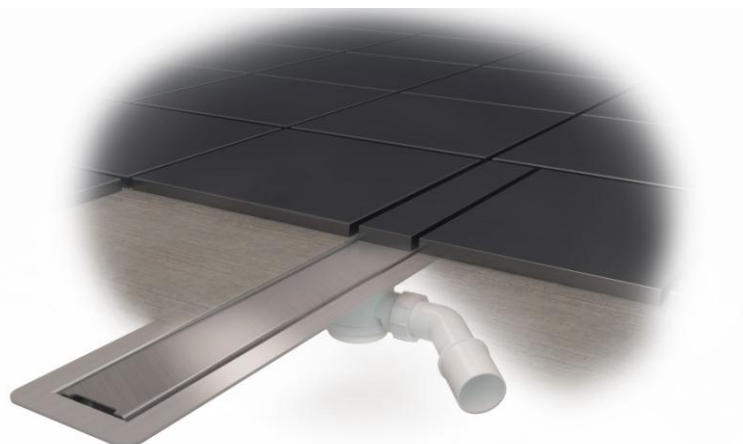
The **WIPER INVISIBLE** shower channel concept is a visually minimalistic version of a linear drain. Once installed the channel is 100% invisible. The only visible features are the gaps in the floor through which the water drains. We recommend this solution for floors made of materials which can be aesthetically finished after cutting (e.g. gres or granite).

The surface of the chute grate is especially suitable for permanent adhesive bonding of floor (tiles, stoneware, granite, etc.).

The channels are made of high quality stainless steel
- AISI 304 (AISI 316 as an option) 1.5 mm thick.

Standard lengths:

600, 700, 800, 900, 1000, 1100, 1200 [mm]



Water flow capacity:

$Q [l/min]: 26/50^{1)}$

1) Flow capacity according to EN PN 274:2002 (for a 15mm/120mm liquid column)

WIPER channels from the INVISIBLE series are equipped with an insulation flange which is useful in floor installations with an insulation layer. Optionally, an insulation cuff can be used, which facilitates the installation. Upon individual request, we also offer non-standard length drains, angled channels, L-type channels, channels with bent flanges and channels with multiple drains.