

Please read the instructions carefully before installation. The instructions refer to the correct installation of the channel only and do not include information regarding insulation of other elements of the shower cabin such as sealing the connections between the shower walls and floor as well as water proofing. A diagram showing the various parts of the channel and their dimensions can be found on the reverse side of the page.



1. Set the level of the finished shower floor surface and mark it on the wall in the area where the channel will be fitted (allow for the slope of the shower surface).



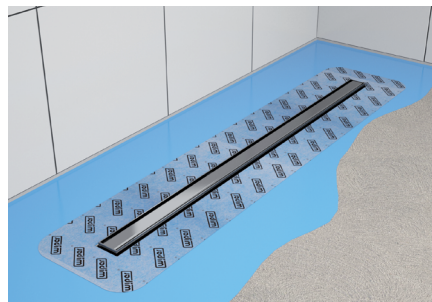
2. The adjustable legs (optional additional payment) should be glued in the places shown. Connect the channel to the drainage system and set the height using the adjustable legs so that the upper edge of the frame is approximately 1mm below the finished surface level of the shower. We recommend that you do not remove the protective foil from the grating until the installation is complete.



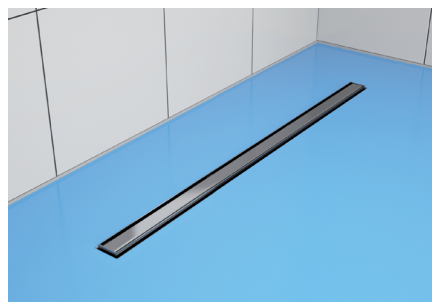
3. Fill the surface under and around the outlet with floor mortar up to the level of the gutter flange, maintaining appropriate slope.



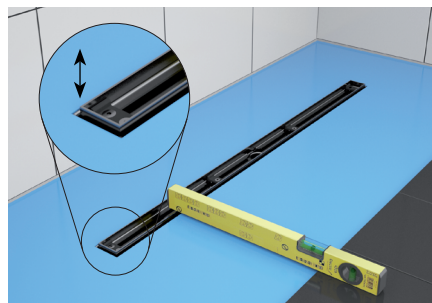
4. Cover the flange and the surrounding area with an insulating foil in a liquid form.



5. Unfold the membrane and slightly press it to the wet foil to ensure close adherence.



6. After drying, apply another layer of liquid foil agent onto the entire surface, including the membrane.



7. Adjust the frame height to the desired level using relevant screws.



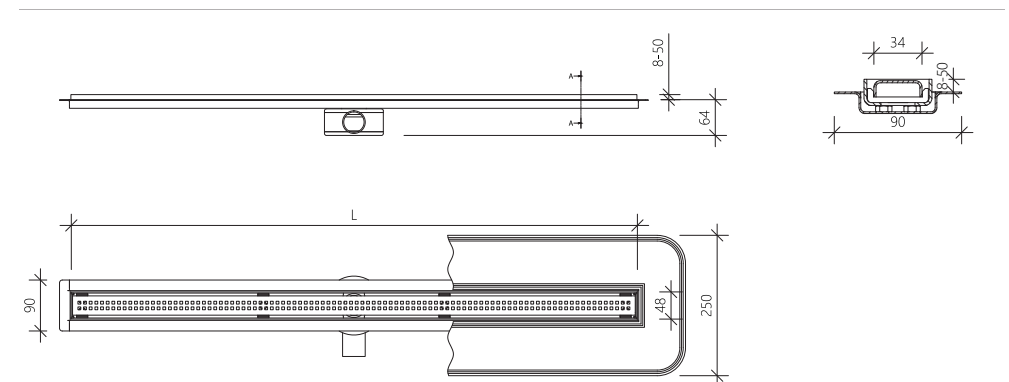
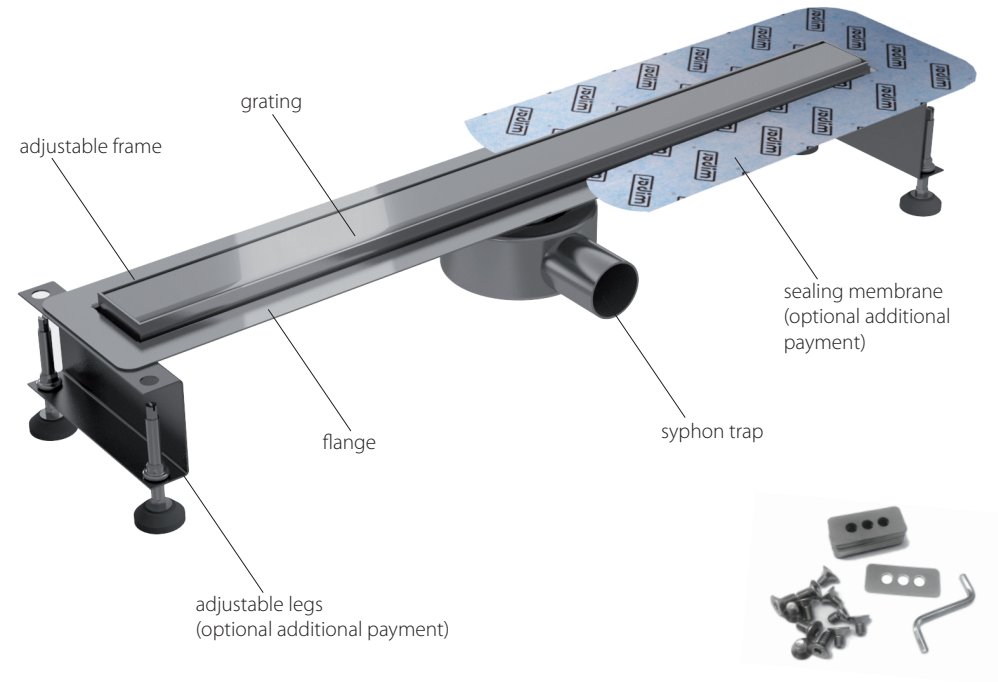
8. Once the liquid foil is completely dry as per the manufacturer's instructions, the shower surface can be tiled (eg ceramic tiles or granite). Seal the gap between the tiles and the channel frame with flexible sanitary silicone compatible with the tile and grout colour.

# Warranty terms and conditions

1. The warranty is the manufacturer's, namely Wiper sp. z o.o. company, pledge to repair free of charge physical defects of the product. The warranty period, 10 years, is counted from the date of purchase indicated on the invoice or receipt.
2. The manufacturer guarantees that the purchased product was manufactured in accordance with the approved design, has the properties specified in the product data sheet and is free of defects, has technical parameters specified for this type of product and meets the standards set out in the Declaration of Conformity.
3. Proof of purchase - invoice, receipt must be provided to receive warranty service.
4. The warranty is granted to a person/company indicated on the invoice.
5. The present warranty will not cover the products damaged as a result of:
  - 5.1 – improper handling or operation and maintenance outside the product's specifications,
  - 5.2 – mechanical damage to the product after purchase, during transportation or storage
  - 5.3 – installation contrary to the installation instructions recommended by the manufacturer, an attempt to make technical change or an attempt to interfere with the structure and integrity of the product after its purchase, as well as use of the product after stating its malfunction
  - 5.4 – using chemical agents not covered by the resistance for the material bearing 0H18N9/0H18N10 symbol pursuant to the European Standards EN10088-1, EN10088-2, EN10088-3
  - 5.5 – damage caused by fortuitous events and natural disasters.
6. The warranty applies to the product purchased and does not include the right to seek reimbursement or payment for the damages caused by malfunction of the product, which can be settled only through the court pursuant to the relevant applicable law.
7. Wiper Company undertakes to consider the warranty claim within 14 working days after its registration.
8. Should the claim be accepted, the manufacturer will replace the entire product or its defective part within 14 working days from accepting the claim. The decision of which option to choose lies with the manufacturer and does not require the consent of the claimant.
9. Any warranty claims must be made with the Seller of the product.

# Diagram of various parts

724\_2/EN/3



Wiper Sp. z o.o., ul. Wyzwolenia 27, 43-190 Mikołów, +48 (32) 738 5000, poczta@wiper.pl, www.wiper.pl