

902/EN/19

GBP

05/2023

wiper®

PRICE LIST





PRICE LIST

Custom orders by the valuation. All prices are without VAT in EUR. Producer has the rights to changes without any notice.

wiper®

LINEAR DRAINAGE



TYPE	PREMIUM (ZONDA, MISTRAL, SIROCCO, TIVANO)	PREMIUM (PURE, PONENTE, REVERS)	PREMIUM ZK (ZONDA, MISTRAL, SIROCCO, TIVANO)	PREMIUM ZK (PURE, PONENTE, REVERS)	INVISIBLE	ELITE (PONENTE, PURE, ZONDA, MISTRAL, SIROCCO, TIVANO)	CLASSIC (ZONDA, MISTRAL, SIROCCO, TIVANO)	CLASSIC (PONENTE, PURE)
[mm]	[brushed/polished/ matt]	[brushed/polished/ matt]	[brushed/polished/ matt]	[brushed/polished/ matt]		[brushed/polished/ matt]	[brushed/polished/ matt]	[brushed/polished/ matt]
500	147,-	161,-	231,-	246,-	147,-	185,-	118,-	133,-
600	158,-	171,-	242,-	258,-	158,-	196,-	129,-	142,-
700	170,-	183,-	255,-	269,-	170,-	207,-	138,-	151,-
800	181,-	195,-	266,-	282,-	181,-	219,-	147,-	161,-
900	193,-	207,-	278,-	293,-	193,-	230,-	157,-	171,-
1000	205,-	218,-	290,-	305,-	205,-	242,-	167,-	180,-
1100	216,-	230,-	302,-	316,-	216,-	254,-	176,-	189,-
1200	228,-	242,-	313,-	329,-	228,-	266,-	186,-	199,-

The price includes the SNAKE siphon as standard. Others: Drop 35 / Drop 50 / McAlpine optional, please report when ordering.

LINEAR DRAINAGE SLIM



SEALING MEMBRANE



SEALING MEMBRANE INTEGRATED



TYPE	PREMIUM SLIM (PONENTE, PURE, MISTRAL, SIROCCO)	ELITE SLIM (PONENTE, PURE, SIROCCO)	INVISIBLE SLIM
[mm]	[brushed/polished/ matt]	[brushed/polished/ matt]	
500	206,-	228,-	206,-
600	217,-	240,-	217,-
700	228,-	251,-	228,-
800	241,-	264,-	241,-
900	252,-	275,-	252,-
1000	264,-	287,-	264,-
1100	276,-	298,-	276,-
1200	288,-	310,-	288,-

TYPE	PREMIUM, PREMIUM SLIM, INVISIBLE, INVISIBLE SLIM	ELITE, ELITE SLIM	PREMIUM ZK
[mm]			
500	14,-	18,-	26,-
600	15,-	20,-	29,-
700	17,-	21,-	31,-
800	18,-	24,-	34,-
900	20,-	24,-	36,-
1000	21,-	26,-	39,-
1100	24,-	28,-	42,-
1200	25,-	29,-	45,-

PREMIUM, PREMIUM SLIM, INVISIBLE, INVISIBLE SLIM	ELITE, ELITE SLIM	PREMIUM ZK
24,-	27,-	38,-
24,-	29,-	41,-
25,-	29,-	45,-
27,-	32,-	47,-
28,-	33,-	49,-
30,-	34,-	52,-
32,-	36,-	55,-
34,-	38,-	58,-

INTENSI 316 - NEW

LIN LAN



UNO
DUO
UNO
DUO

TYP	SILVER	HONEY GOLD	GOLD	BRIGHT GOLD	COPPER NEW	GRAPHIT BLACK
[mm]	[brushed/polished/ matt]	[brushed/polished/ matt]	[brushed/polished/ matt]	[brushed/polished/ matt]	[brushed/polished/ matt]	[brushed/polished/ matt]
1200	363,-	514,-	514,-	514,-	514,-	514,-
1200	394,-	545,-	545,-	545,-	545,-	545,-
1500	448,-	697,-	697,-	697,-	697,-	697,-
1500	477,-	728,-	728,-	728,-	728,-	728,-

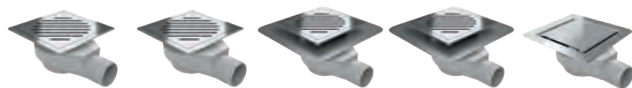
VINYL FLOOR - NEW



(PONENTE, MISTRAL, ZONDA, BUBBLE, LINE, SPRINKLE) [brushed]

TYP [mm]	500	600	700	800	900	1000	1100	1200
	226,-	241,-	255,-	270,-	284,-	298,-	313,-	328,-

POINT OUTLETS



SEALING MEMBRANE



TYPE [mm]	WP CLASSIC [brushed/matt]	WP CLASSIC [polished]	WP PREMIUM [brushed/matt]	WP PREMIUM [polished]	WP INVISIBLE
100 x 100	47,-	52,-	53,-	60,-	53,-
120 x 120	60,-	70,-	70,-	80,-	70,-
150 x 150	75,-	91,-	87,-	102,-	87,-
150 x 150 with siphon F*	97,-	112,-	108,-	123,-	108,-

WP PREMIUM INVISIBLE	WP PREMIUM INVISIBLE
7,-	12,-
8,-	13,-
9,-	14,-
9,-	14,-

TYPE items	WIPER TOP [brushed/matt]	WIPER TOP [polished]
gully	65,-	80,-
membrane	18,-	18,-
flange	13,-	13,-
set (gully + membrane + flange)	88,-	104,-

*siphon F Ø90

The price includes the DROP 35 siphon as standard. Others: DROP 50, McAlpine optional, please report when ordering.

Note: Not available with SNAKE trap.

Ponente option available only with McAlpine Trap.

EYE-DRAIN

set includes: drain, siphon, sealing membrane, adjustable legs type 1



TYPE [mm]	EYE-DRAIN A1	EYE-DRAIN A2	EYE-DRAIN A2L	EYE-DRAIN A4
600	697,-	697,-	1172,-	1172,-
700	776,-	776,-	1330,-	1330,-
800	855,-	855,-	1488,-	1488,-
900	934,-	934,-	1647,-	1647,-
1000	1013,-	1013,-	1805,-	1805,-
1100	1093,-	1093,-	1964,-	1964,-
1200	1172,-	1172,-	2122,-	2122,-

EYE-DRAIN A0
222,-

SIPHONS



shower tray

BRIDGE 90* NEW	Snake	Drop35	Drop50	McAlpine	McAlpine vertical
27,-	18,-	18,-	18,-	18,-	18,-

*available in 3 colors (white, gray and black)

ADJUSTABLE LEGS

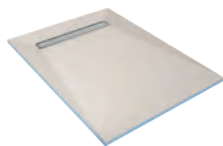


PCL-1
24,-



Dry Trap for SNAKE - DT1
13,-

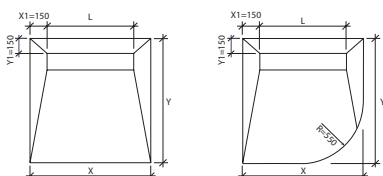
SHOWERLAY



set includes:

- prefabricated plate SHOWERLAY,
 - linear drain body PREMIUM with cover (choose a pattern and surface finish),
 - siphon DROP 35 as standard.
- Others: DROP 50 / McAlpine optional, please request when ordering. Note: Not available with SNAKE siphon.

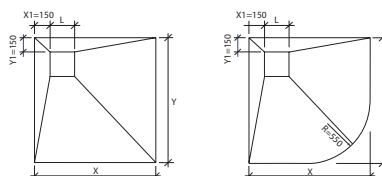
Y [mm]	X [mm]	L [mm]	thick. 20 mm	thick. 30 mm	thick. 40 mm
800	800	500	268,-	275,-	282,-
900	900	600	313,-	321,-	330,-
1000	1000	700	359,-	369,-	380,-
1200	800	500	363,-	375,-	386,-
1200	900	600	373,-	383,-	393,-
1200	1200	900	464,-	479,-	495,-
1500	800	500	–	386,-	399,-
1500	900	600	–	427,-	441,-
1600	900	600	–	445,-	460,-
1700	900	600	–	464,-	480,-
1850	900	600	–	490,-	507,-
PONENTE/PURE			+ 14,-		



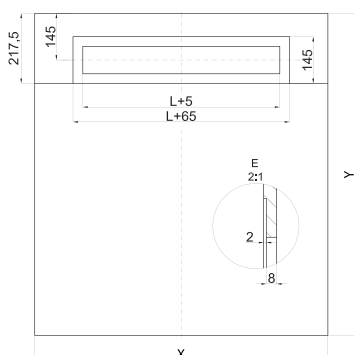
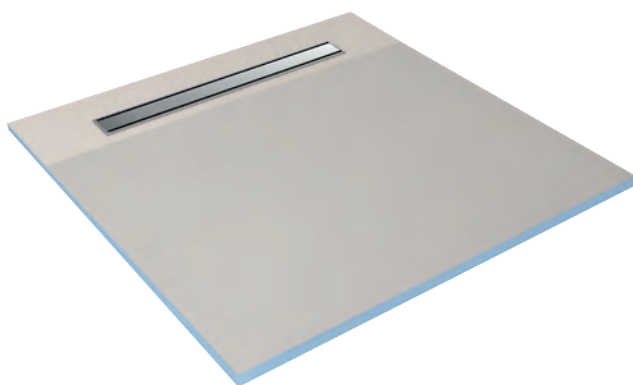
set includes:

- prefabricated plate SHOWERLAY,
 - gully with cover (choose a pattern and surface finish),
 - siphon DROP 35 as standard.
- Others: DROP 50 / McAlpine optional, please request when ordering. Note: Not available with SNAKE siphon.

Y [mm]	X [mm]	L [mm]	thick. 20 mm	thick. 30 mm	thick. 40 mm
800	800	120	182,-	189,-	196,-
900	900	120	216,-	225,-	234,-
1000	1000	120	250,-	261,-	272,-
1200	800	120	235,-	245,-	255,-
1200	900	120	266,-	278,-	290,-
1200	1200	120	333,-	348,-	363,-
1500	800	120	–	300,-	313,-
1500	900	120	–	330,-	345,-
1600	900	120	–	348,-	363,-
1700	900	120	–	367,-	384,-
1850	900	120	–	393,-	410,-
option: WP150 with siphon F (Ø90)			+ 38,-		



SHOWERLAY ONEWAY

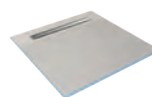


Set included:

- prefabricated plate OneWay,
- linear drain body PREMIUM with cover (choose a pattern and surface finish),
- siphon DROP 35 as standard.

Others: DROP 50 / McAlpine optional, please request when ordering. Note: Not available with SNAKE siphon.

UNDER-FLOOR SLAB



Y [mm]	X [mm]	L [mm]	thick. 30 mm	thick. 40 mm
800	800	500	275,-	282,-
1200	800	500	375,-	386,-
1500	800	500	386,-	399,-
900	900	600	321,-	330,-
1200	900	600	383,-	393,-
1400	900	600	416,-	428,-
1500	900	600	427,-	441,-
1600	900	600	445,-	460,-
1700	900	600	464,-	480,-
1850	900	600	490,-	507,-
1000	1000	700	369,-	380,-
1000	1200	700	415,-	427,-
1000	1500	700	475,-	491,-
1200	1200	900	479,-	495,-
PONENTE/PURE			+ 14,-	

SOLID EYE



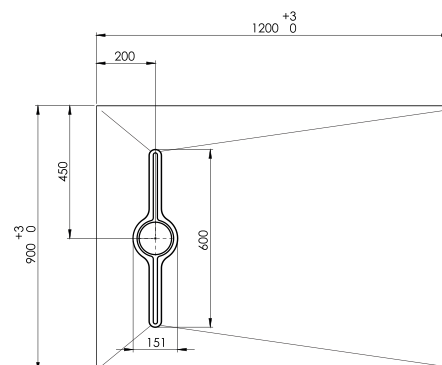
Set consist of:

1. Composite shower tray
2. Eye-cover, stainless steel, polished surface
3. BRIDGE 90 siphon for shower tray



SHOWER TRAY

[mm]	net price
1200 x 900 x 30	480,-



TANKING KIT

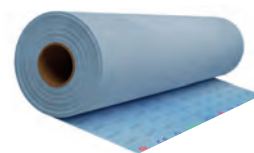


Tanking kit contains:

- 4 kg tanking liquid
- 1 l primer
- 10 m sealing tape
- 2 pcs. pipe collars
- 2 pcs. corners NW

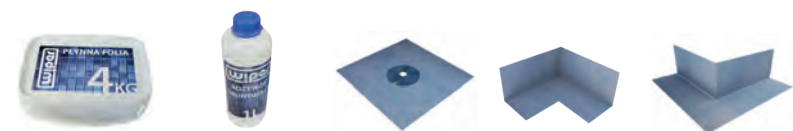
SET
106,-

ISOL-ONE MAT



	ISOL-ONE M100 (width 100 cm)	ISOL-ONE M200 (width 200 cm)
m	12,70	26,20
roll 30 m	359,30	744,20

ISOL-ONE SEALING TAPE



tanking liquid 4 kg	primer 1 l	ISOL-ONE O	ISOL-ONE NW	ISOL-ONE NZ
46,40	7,43	4,60	2,50	2,50

	ISOL-ONE T (width 12 cm)
m	2,15
roll 50 m	103,70

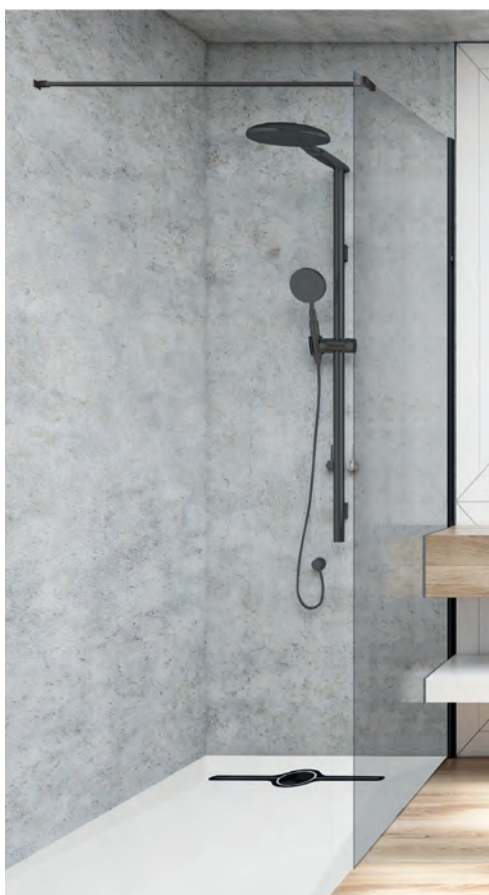
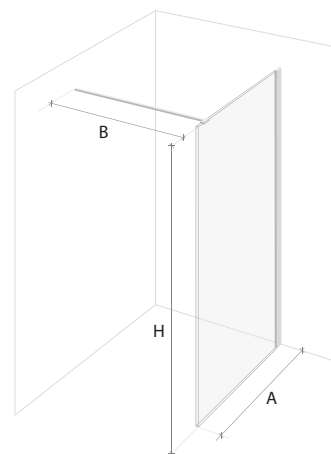
Shower cabins VERRE

NEW


BRIGHT

A	H	B* max	net prices GBP per set
50	200	120	410,-
60	200	120	426,-
70	200	120	442,-
80	200	120	458,-
90	200	120	474,-
100	200	120	490,-
110	200	120	505,-
120	200	120	521,-
130	200	120	553,-
140	200	120	584,-
150	200	120	616,-
160	200	120	647,-

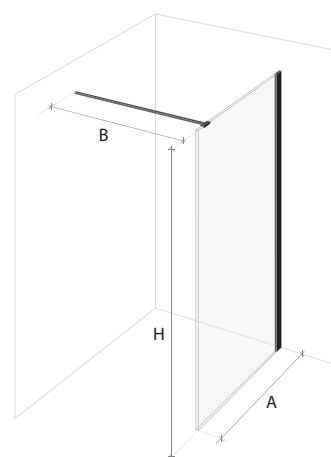
* maximum length of the bracket



BLACK

A	H	B* max	net prices GBP per set
50	200	120	456,-
60	200	120	472,-
70	200	120	488,-
80	200	120	504,-
90	200	120	520,-
100	200	120	536,-
110	200	120	551,-
120	200	120	567,-
130	200	120	599,-
140	200	120	630,-
150	200	120	662,-
160	200	120	693,-

* maximum length of the bracket



SUNFLOOR



FOR FREE
electrical box

Set composition:

- mat 50 cm x 2 ÷ 40 m
- a flexible sensor tube
- phone app
- installation instructions

Thermostat WiFi with sensor
available in colors:

- black • white



Manual thermostat
with sensor:



HEATING MAT

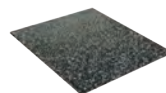
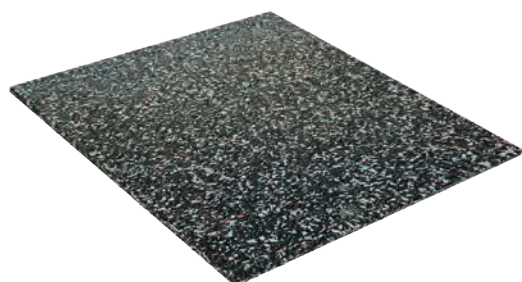
size [m ²]	length [m]	width [cm]	power	net price
1	2	50	150 W	58,-
1,5	3	50	225 W	66,-
2	4	50	300 W	78,-
2,5	5	50	375 W	91,-
3	6	50	450 W	101,-
3,5	7	50	525 W	115,-
4	8	50	600 W	124,-
4,5	9	50	675 W	135,-
5	10	50	750 W	146,-
6	12	50	900 W	171,-
7	14	50	1050 W	199,-
8	16	50	1200 W	227,-
9	18	50	1350 W	259,-
10	20	50	1500 W	274,-
12	24	50	1800 W	310,-
15	30	50	2250 W	392,-
20	40	50	3000 W	528,-



THERMOSTATS

TYPE	net price
C16 white	114,-
C16 black	114,-
manual	71,-

WIPER SOUND STOP



SOUNDPROOF MAT

[cm]	net price
125 x 125 x 0,6	50,-

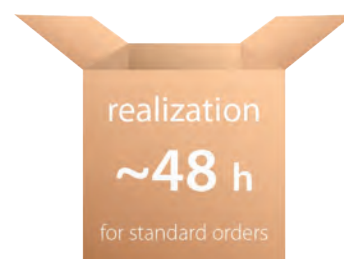
HYGIENIC CERTIFICATE

We are proud to announce that WIPER are now members of the programme 'Product with Atest' of the National Institute of Public Health – National Institute of Hygiene



WARRANTY TERMS AND CONDITIONS

1. The warranty is the manufacturer's, namely Wiper sp. z o.o. company, pledge to repair free of charge physical defects of the product. The warranty period, 25 years, is counted from the date of purchase indicated on the invoice or receipt.
2. The manufacturer guarantees that the purchased product was manufactured in accordance with the approved design, has the properties specified in the product data sheet and is free of defects, has technical parameters specified for this type of product and meets the standards set out in the Declaration of Conformity.
3. Proof of purchase - invoice, receipt must be provided to receive warranty service.
4. The warranty is granted to a person/company indicated on the invoice.
5. The present warranty will not cover the products damaged as a result of:
 - 5.1 – improper handling or operation and maintenance outside the product's specifications,
 - 5.2 – mechanical damage to the product after purchase, during transport, storage and scratches during use,
 - 5.3 – installation contrary to the installation instructions recommended by the manufacturer, an attempt to make technical change or an attempt to interfere with the structure and integrity of the product after its purchase, as well as use of the product after stating its malfunction
 - 5.4 – using chemical agents not covered by the resistance for the material bearing OH18N9/OH18N10 symbol pursuant to the European Standards EN10088-1, EN10088-2, EN10088-3
 - 5.5 – damage caused by fortuitous events and natural disasters.
6. The warranty applies to the product purchased and does not include the right to seek reimbursement or payment for the damages caused by malfunction of the product, which can be settled only through the court pursuant to the relevant applicable law.
7. Wiper Company undertakes to consider the warranty claim within 14 working days after its registration.
8. Should the claim be accepted, the manufacturer will replace the entire product or its defective part within 14 working days from accepting the claim. The decision of which option to choose lies with the manufacturer and does not require the consent of the claimant.
9. Any warranty claims must be made with the Seller of the product.





WIPER Sp. z o.o.
ul. Kolejowa 2
43-190 Mikołów
POLAND

+48 (32) 738 5000
poczta@wiper.pl

www.wiper.pl